



City



City

**City is designed by
Øivind Iversen for
Fora Form**



The City chair is one of the foremost Norwegian design icons. The chair was designed in the 50's inspired by a curvaceous woman. Great design and fantastic comfort has made the chair a bestseller. Today the City chair is available in a wide variety of designs; veneer, plastic and with an upholstered cover. The auditorium, dining, living room, meeting room, cultural center, or kitchen are all popular uses for this design classic.

★ **The City chair is with it's wide vaiety of designs one of the markets most fleksible classic designs.**

★ **The classic design makes this a chair that stays relevant for eternity.**

Technical information:

- Chair hanger in anthracite grey RAL7012
- Stacks 11 pcs.
- Linking device in black
- Armrest in soft grip (PP/TPR)
- The loose seat pads have a rubberized underside.
- City with fixed seat cushion should not be stacked over time.
- Stacks 10 pcs. City w/o armrest, w/seat cushion we recommend to stack 6 pcs.
- Stacks 10 pcs. City w/ armrest on chair storage trolley
- 3 pcs. City w/ armrest stacked on the floor
- Base in chrome or metallic epoxy, black epoxy RAL 9005/white epoxy RAL 9016 at no additional cost.
- City I (four legged base) has plastic gliders, City II (sled base) has felt gliders
- City in plastic is also available with NCS epoxy-colored base in the same colors as the plastic shells

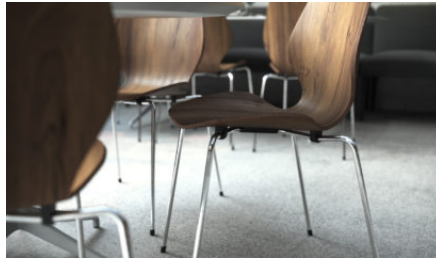
Models:



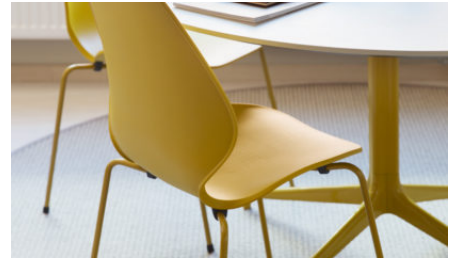
Inspiration:



City chairs in walnut and Kvant table in a restaurant



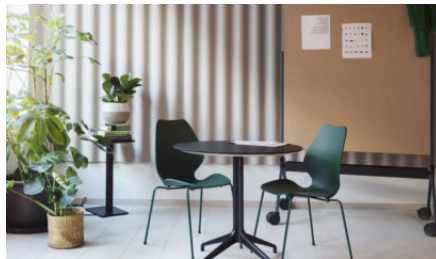
City original walnut chair in a restaurant.



City chairs along with a Kvant table



City Cover at Finansparken Retailer:
Senab Eikeland Photo: Arne Bru Haug



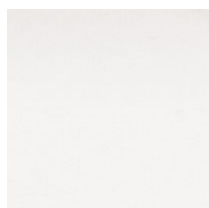
City chairs in dark green design along
with Kvant table



City stacks 11 pcs

Materials:

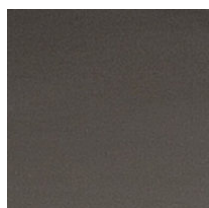
Plastic



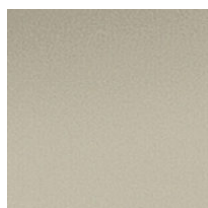
White



Medium grey



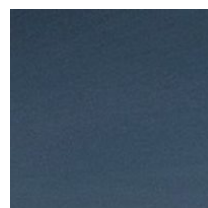
Dark grey



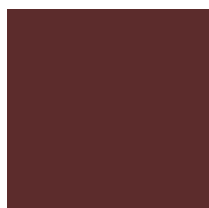
Beige



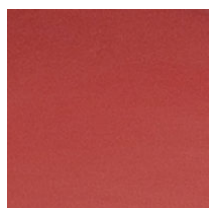
Grey blue



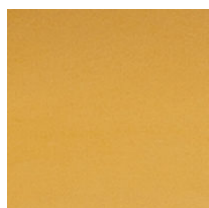
Blue



Burgundy



Red



Orange



Yellow



Light green



Medium green



Dark green

Steel



Chrome



Metallic epoxy



Brass



White epoxy



Medium grey



Dark grey



Beige



Grey blue



Blue epoxy (NCS
S 7020 - B)



Burgundy epoxy



Red epoxy



Orange epoxy



Yellow epoxy



Light green epoxy



Medium green epoxy

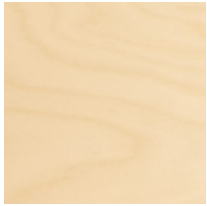


Dark green epoxy



Black epoxy

Veneer



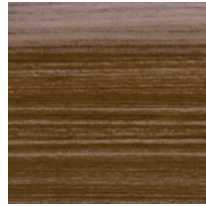
Birch



Oak



Oak matte stain



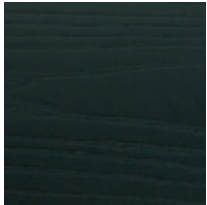
Walnut



Smoked oak



Whitewashed oak



Blackstained

Cover



Capture Rust



Capture Field



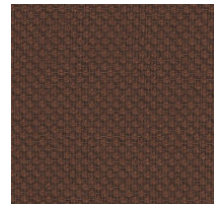
Capture Forrest



Capture Fog



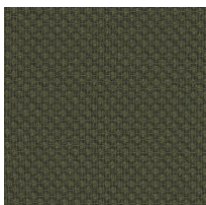
Capture Ocean



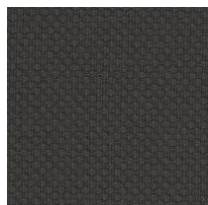
Rondo Rust



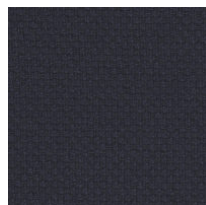
Rondo Field



Rondo Forrest



Rondo Fog



Rondo Ocean

Fora Form AS

T: +47 70 04 60 00

E: info@foraform.com

NO 986 581 421 MVA

foraform.no

Ørsta Head office: Fora Form, Box 4. N-6154 Ørsta Location: Mosfløtevegen, N-6150 Ørsta

Oslo Showroom: Pilestredet 75c, Entrance 38, N-0354 Oslo

Bergen Showroom: Eidsvågbakken 1, 5105 Eidsvåg, Bergen

Stockholm Showroom: Adolf Fredriks Kyrkogata 15, SE-111 37 Stockholm. Sweden