



City



City

City is designed by
Øivind Iversen for Fora
Form



The City chair is one of the foremost Norwegian design icons. The chair was designed in the 50's inspired by a curvaceous woman. Great design and fantastic comfort has made the chair a bestseller. Today the City chair is available in a wide variety of designs; veneer, plastic and with an upholstered cover. The auditorium, dining, living room, meeting room, cultural center, or kitchen are all popular uses for this design classic.

★ **The City chair is with it's wide variety of designs one of the markets most fleksible classic designs.**

★ **The classic design makes this a chair that stays relevant for eternity.**

Technical information:

- Chair hanger in anthracite grey RAL7012
- Linking device in black
- Armrest in soft grip (PP/TPR)
- The loose seat pads have a rubberized underside.
- City with fixed seat cushion should not be stacked over time.
- Stacks 10 pcs. City w/o armrest, w/seat cushion we recommend to stack 6 pcs.
- Stacks 10 pcs. City w/ armrest on chair storage trolley
- 3 pcs. City w/ armrest stacked on the floor
- Base in chrome or metallic epoxy, black epoxy RAL 9005/white epoxy RAL 9016 at no additional cost.
- City I (four legged base) has plastic gliders, City II (sled base) has felt gliders
- City in plastic is also available with NCS epoxy-colored base in the same colors as the plastic shells

Models:



Measurements:

Transportation trolley for chairs -

City can be hung on tables using armrests -

Chair hanger -

City Linking device -

Loose seat cushion in microfiber or wool -

City with cover - **B:** 50/52,5 cm **H:** 87 cm **D:** 55 cm **SH:** 46 cm

City II Plastic with sled base and armrests - **B:** 52,5 cm **H:** 87 cm **D:** 55 cm **SH:** 46 cm

City II Plastic with sled base - **B:** 50 cm **H:** 87 cm **D:** 55 cm **SH:** 46 cm

City I Plastic with armrests and fixed seat cushion - **B:** 52,5 cm **H:** 87 cm **D:** 55 cm **SH:** 46 cm

City I Plastic - **B:** 50 cm **H:** 87 cm **D:** 55 cm **SH:** 46 cm

City II Original, sled base and armrests - **B:** 52,5 cm **H:** 87 cm **D:** 55 cm **SH:** 46 cm

City II Original sled base - **B:** 50 cm **H:** 87 cm **D:** 55 cm **SH:** 46 cm

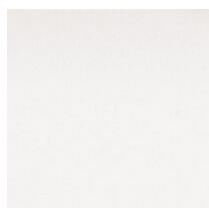
City Original four legs with armrests - **B:** 52,5 cm **H:** 87 cm **D:** 55 cm **SH:** 46 cm

City leather cover - **B:** 50 cm **H:** 87 cm **D:** 55 cm **SH:** 46 cm

City I Original, four legs - **B:** 50 cm **H:** 87 cm **D:** 55 cm **SH:** 46 cm

Materials:

Plastic



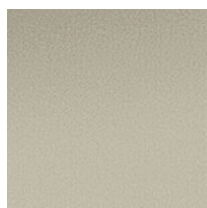
White



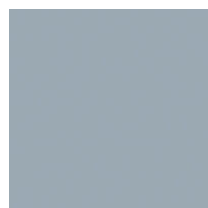
Medium grey



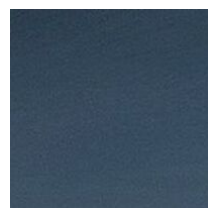
Dark grey



Beige



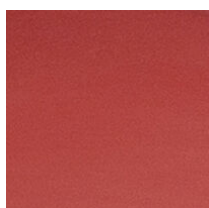
Grey blue



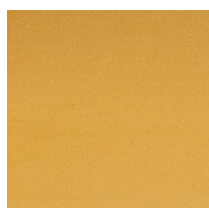
Blue



Burgundy



Red



Orange



Yellow



Light green



Medium green



Dark green

Steel



Chrome



Metallic epoxy



Brass



White epoxy



Medium grey



Dark grey



Beige



Grey blue



Blue epoxy (NCS S
7020 - B)



Burgundy epoxy



Red epoxy



Orange epoxy



Yellow epoxy



Light green epoxy



Medium green epoxy



Dark green epoxy



Black epoxy

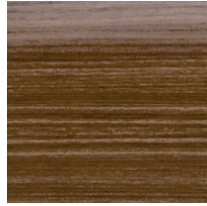
Veneer



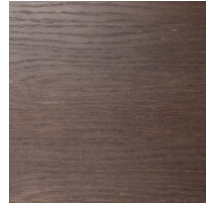
Birch



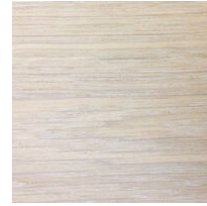
Oak matte stain



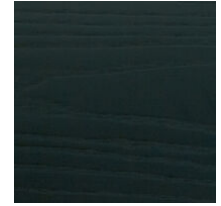
Walnut



Smoked oak



Whitewashed oak



Blackstained

Cover



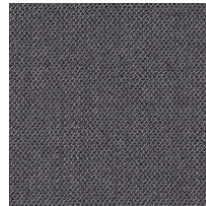
Capture Rust



Capture Field



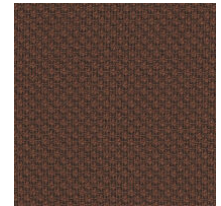
Capture Forrest



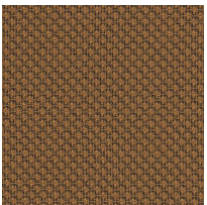
Capture Fog



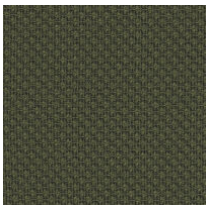
Capture Ocean



Rondo Rust



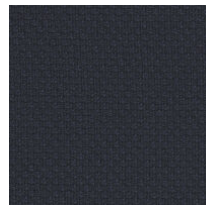
Rondo Field



Rondo Forrest



Rondo Fog



Rondo Ocean



Prescott Black Ink



Prescott Chestnut



Prescott Swamp

Standard Textiles

Amdal Collection - Amdal from Gudbrandsdalens Uldvarefabrik is in price group B

Atlas Collection - Atlas from Kvadrat is in price group A

Bardal Collection - Bardal from Gudbrandsdalens Uldvarefabrik is in price group B

Canvas Collection - Canvas from Kvadrat is in price group B

Capture Collection - Capture from Gabriel is in price group A

Crisp Collection - Crisp from Gabriel is in price group A

Cura Collection - Cura from Gabriel is in price group Economy

Fiord 2 Collection - Fiord 2 from Kvadrat is in price group B

Gandal Collection - Gandal from Gudbrandsdalens Uldvarefabrik is in price group B

Hallingdal Collection - Hallingdal from Gudbrandsdalens Uldvarefabrik is in price group B

Heidal Collection - Heidal from Gudbrandsdalens Uldvarefabrik is in price group A

Jaali Collection - Jaali from Kvadrat is in price group C

Morph Collection - Morph from Gabriel is in price group B

Coda 2 Collection - Coda from Kvadrat is in price group D

Passion Collection - Passion from Gabriel is in price group B

Prescott Collection - Prescott Leather from Nevotex

Re-wool Collection - Re-wool from Kvadrat is in price group B

Remix 2 Collection - Remix 2 from Kvadrat is in price group A

Rondo Collection - Rondo from Gabriel is in price group Economy

Raas Collection - Raas from Kvadrat is in price group C

Select Collection - Select from Gabriel is in price group A

Steelcut Trio 3 Collection - Steelcut Trio 3 from Kvadrat is in price group C

Steelcut 2 Collection - Steelcut 2 from Kvadrat is in price group C

Synergy Collection - Synergy from Camira is in price group B

Vidar Collection - Vidar from Kvadrat is in price group C