



Otis ottoman



Otis ottoman

Otis ottoman is designed
by Olav Eldøy for Fora
Form



An ottoman you can truly sink into: meet Otis. With its precise, slender frame and generously soft cushions, Otis is our most informal and comfortable ottoman. Featuring removable cushions and the option of either steel or wooden legs, Otis invites playful textile combinations between the soft cushions and the structured back frame. An ottoman made for effortless lounging.

Technical information:

- The ottoman is built on a steel construction with nozag springs and an outer frame in traceable and sustainably sourced plywood
- The cushion has a core in cold cured foam, with an over-pillow in excess material and feathers.
- The steel legs are attached to the steel structure.

★ A soft ottoman tailored for the contract market.

★ Detailing that allows you to play with textures and fabrics to create an inviting piece of furniture

Models:



Measurements:

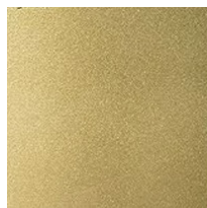
Otis pall - **W:** 86 cm **H:** 43 cm **D:** 69 cm **Weight:** 18 kg

Materials - Otis pall:

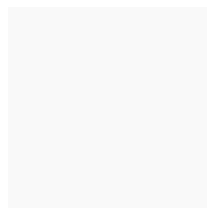
Steel



**Powder coating:
Metallic**



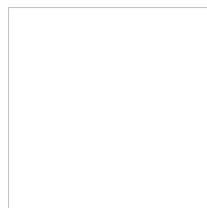
**Powder coating:
Brass**



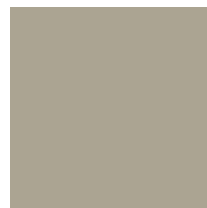
**Powder coating:
White**



**Powder coating:
Medium grey**



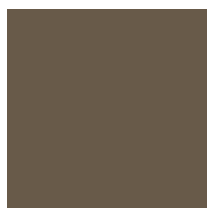
**Powder coating:
Dark grey**



**Powder coating:
Beige**



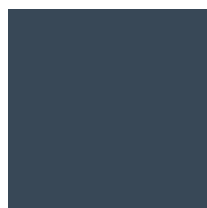
**Powder coating:
Golden pink**



**Powder coating:
Brown**



**Powder coating:
Grey blue**



**Powder coating:
Blue**



**Powder coating:
Burgundy**



**Powder coating:
Red**



**Powder coating:
Orange**



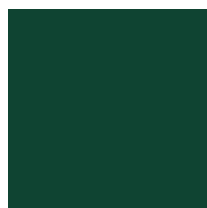
**Powder coating:
Yellow**



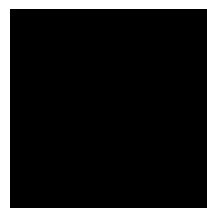
**Powder coating:
Light green**



**Powder coating:
Medium green**

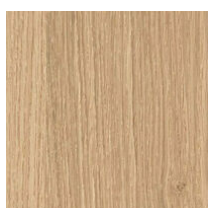


**Powder coating:
Dark green**

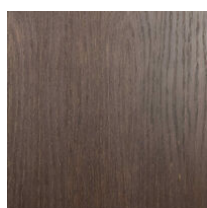


**Powder coating:
Black**

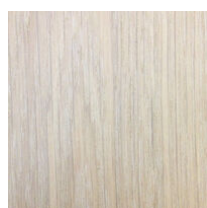
Wood



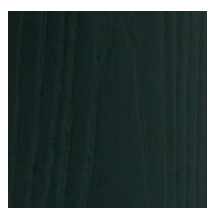
Wood: Natural oak



**Wood: Dark brown
oak**

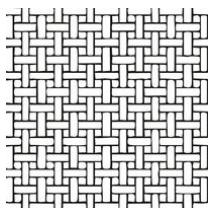


**Wood:
Whitewashed oak**



**Wood: Black
stained oak**

Textile



Textile/leather