



Con



Con

**Con is designed by
Lars Tornøe for Fora
Form**



Con is a versatile chair series for use in several areas of interaction, from formal meeting rooms to canteens. Designer Lars Tornøe started out with shell structures to design a "petite contribution" to Fora Form's collection. The result has been a chair and bar stool made up of two overlapping shells joined by a distinct button, a theme influenced by Japanese armor. The layered design is the foundation for a series of chairs with countless combination options with shells in different designs, armrests and various bases.

★ **The integrated seat cushion combined with a veneer back gives the best in form and function.**

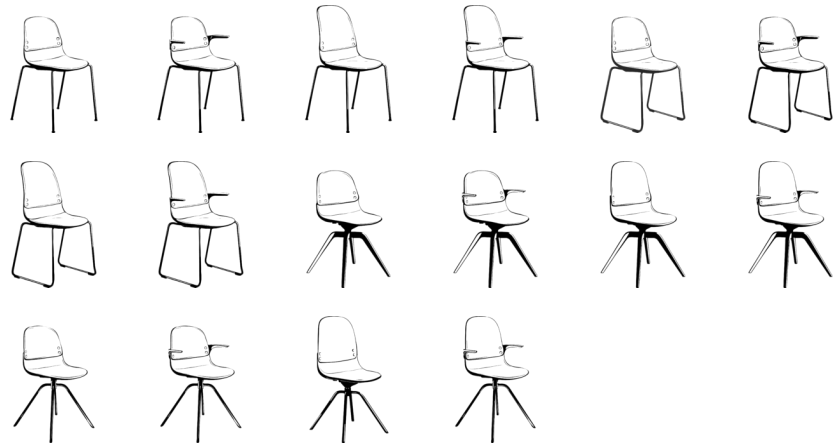
★ **The ability to adapt the material of the top shell is a unique function that turns into a design detail.**

★ **Con offers a wide selection of bases to best fit the space requirements.**

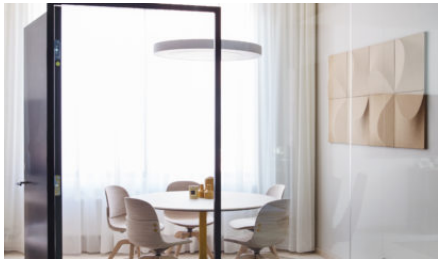
Technical information:

- Back in upholstered, laminated in varnished, smoked, laundered or black-stained oak.
- Con also comes in leather.
- Con has fabric requirements. Fabrics must be approved by Fora Form.
- The buttons are delivered in the same design as the base.
- Chair hanger in RAL7012
- Bar stool: stackable, chrome, black, white or metallic epoxy base. Foot rest always in chrome. NCS / RAL colored base on request. Plastic glider.
- Four legs/sled base: stackable, chrome, black, white or metallic epoxy base. NCS / RAL colored base on request. Plastic Glider.
- Wooden base: lacquered oak, smoked oak or white washed oak. Plastic Glider.
- Swivel base: chrome, black, white or metallic epoxy base. With swing and move function. Plastic Glider.

Models:



Inspiration:



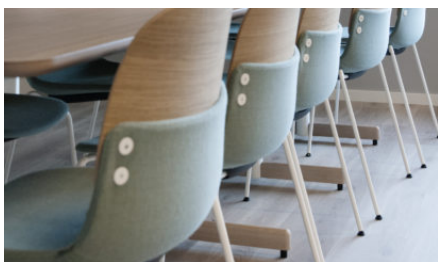
Con chairs and Kwart table in a project room at Fora Form



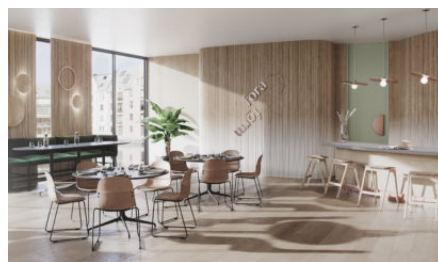
Rome table with Con chairs in a canteen at Fora Form



Con chairs and Roma tables at Fora Form



Con I chairs with white washed oak backs and a Myk table



Con chairs, Kwart table, Crack stools and Senso sofa in a restaurant



Con chairs at Statsbygg. Interior Architect Metropolis, photographer Ragnar Hartvig

Materials:

Steel



Chrome



Metallic epoxy



Brass



White epoxy



Medium grey



Dark grey



Beige



Grey blue



Blue epoxy (NCS
S 7020 - B)



Burgundy epoxy



Red epoxy



Orange epoxy



Yellow epoxy



Light green
epoxy



Medium green
epoxy

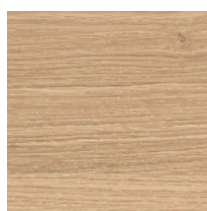


Dark green
epoxy

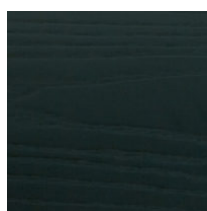


Black epoxy

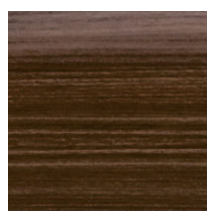
Veneer



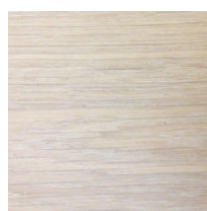
Oak



Blackstained ash



Smoked oak



Whitewashed
oak

E: info@foraform.com
NO 986 581 421 MVA
foraform.no

Oslo Showroom: Pilestredet 75c, Entrance 38, N-0354 Oslo

Bergen Showroom: Eidsvågbakken 1, 5105 Eidsvåg, Bergen

Stockholm Showroom: Adolf Fredriks Kyrkogata 15, SE-111 37 Stockholm. Sweden